

Introducing...

grazers



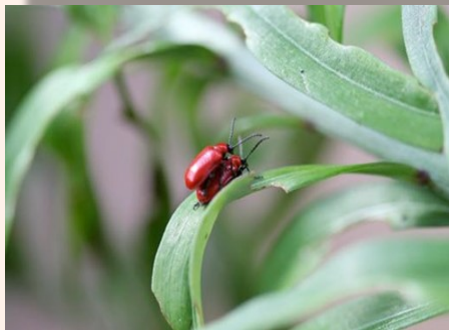
effective against damage from LILY BEETLE

NEW

- ✓ ECO friendly
- ✓ Child friendly
- ✓ Animal friendly
- ✓ Strengthens & stimulates



Red Lily beetle adults and larvae (*Lilioceris lili*)



"I sprayed our lilies with your spray and it was very successful! I sprayed once in April May and June.

Normally our lilies are decimated - we have loads left and will continue to use it" V.G. Devon

Plant	treated	control
1	0	2
2	0	3
3	1	5
4	1	6
5	2	5
6	1	5
7	3	8
8	3	3
9	4	7
10	0	5
11	4	5
12	2	1
13	2	3
14	0	4
15	4	4
total	27	66
average	1.8	4.4

Numbers of larvae on the Grazers treated plants were noticeably lower than on the water controls throughout the period of this study.



Trial report extract: from Pest Effects
The overall conclusion from this study is that, under the conditions described, foliar treatments of Grazers formulations produced clear benefits in reducing the feeding damage of Red Lily beetle infestations to *Lilium regale* plants when applied at 10 day intervals over a 3 month period.

live & let grow!

Showing plant damage levels scored on the scale of 0 to 10.
(0 = No damage 10 = Total damage)